

boar (male bear)



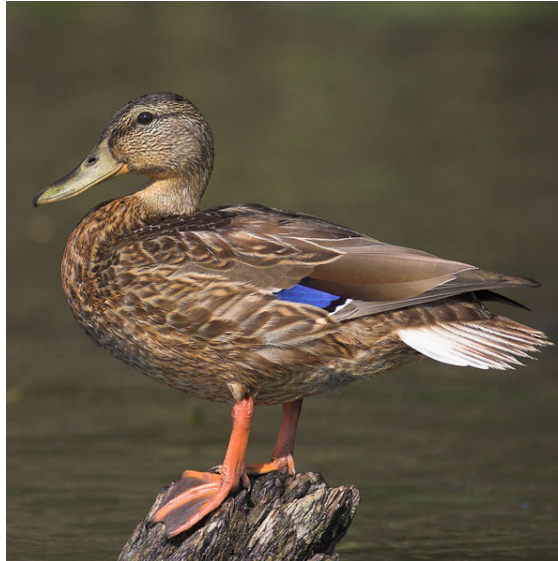
sow (female bear)



cub (baby bear)



drake (male duck)



duck (female duck)



duckling (baby duck)

Note: some sources refer to a female duck as a “hen”, but most commonly, a female duck is simply called a “duck”.



ram (male sheep)



ewe (female sheep)



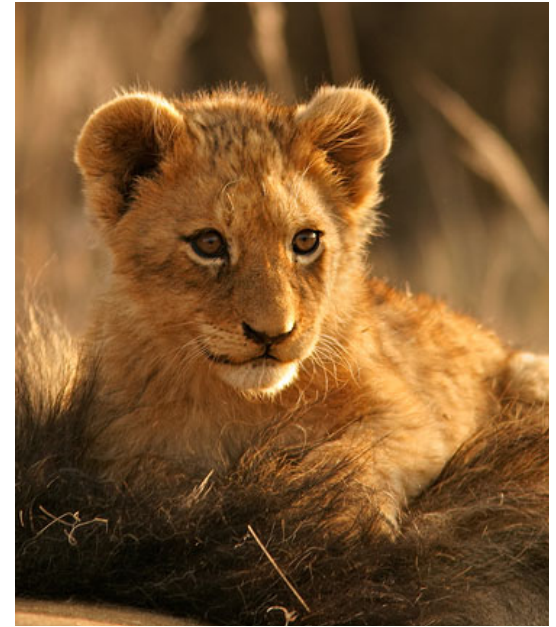
lamb (baby sheep)



lion (male lion)



lioness (female lion)



cub (baby lion)

Instructions: print on cardstock and laminate. Cut cards out. Show child how to match the cards to make the animal families.

If the child is not yet reading, you might want to code the backs of the cards with a colored sticker or dot with a marker, so they can check their own work.

Please note: this PDF is copyrighted by Montessori for Everyone and is free for personal use only. Please do not upload it to any other website (including your school's website) or file-sharing service (like Scribd). Just link to us if you want to share. Thanks!